


# Protecteurs en PLIOPRENE TPE noir

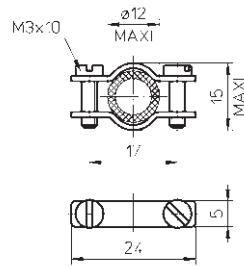


PLIOPRENE TPE

-50 à +125°C

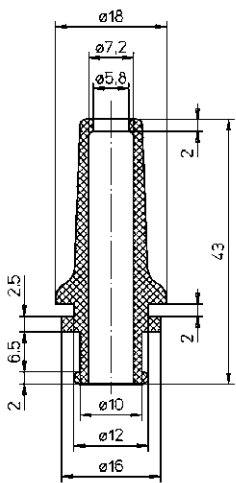


type	code article	
12-542 TPE	0146 0130 010	100
12-552 TPE	0146 0140 010	100
12-553 TPE	0146 0150 010	100
12-581 TPE	0146 0160 010	100
12-582 TPE	0146 0170 010	100
12-583 TPE	0146 0180 010	100
12-598 TPE	0146 0190 010	100
12-599 TPE	0146 0200 010	100
12-600 TPE	0146 0210 010	100
12-908 TPE	0146 0220 010	100
12-1372 TPE	0146 0225 010	50
12-1374 TPE	0146 0230 010	100
12-1392 TPE	0146 0240 010	100
12-1459 TPE	0146 0259 010	100
12-1460 TPE	0146 0260 010	100
12-1462 TPE	0146 0250 010	100
12-1466 TPE	0146 0251 010	100
12-1584 TPE	0146 0261 010	100



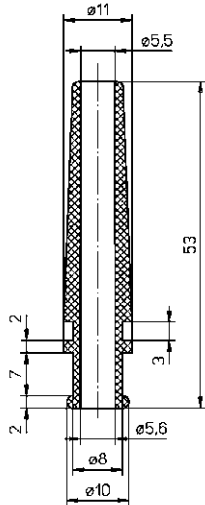
Bride métallique de serrage pour protecteurs  
12-542 ; 12-582 ; 12-583 ; 12-908

type	code article	
16-900	0684 0054 000	100



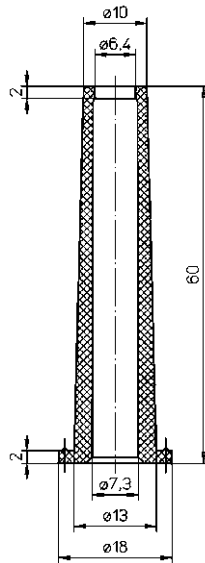
12-542

0146 0130 010



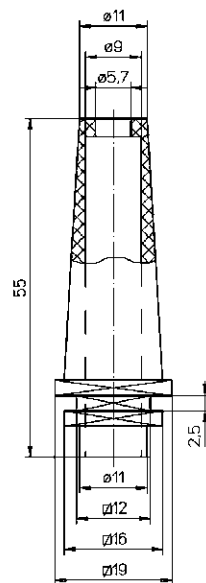
12-582

0146 0170 010



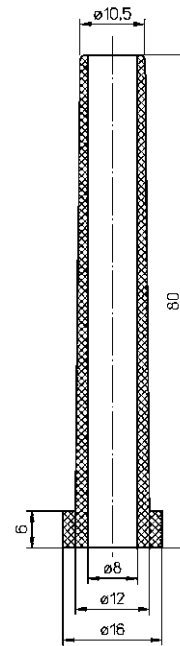
12-1459

0146 0259 010



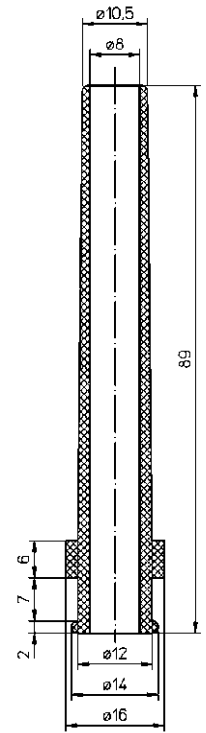
12-1372

0146 0225 010



12-598

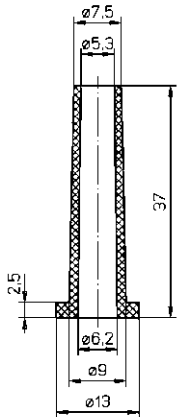
0146 0190 010



12-581

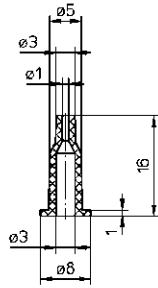
0146 0160 010





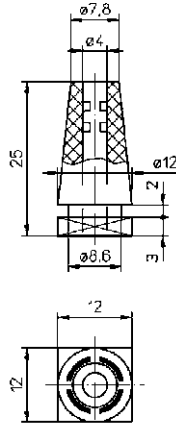
**12-1466**

0146 0251 010



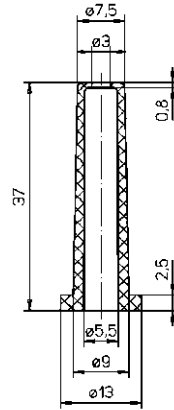
**12-1460**

0146 0260 010



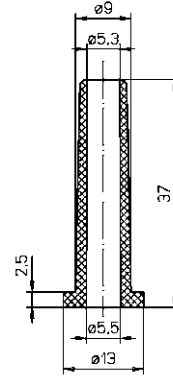
**12-1392**

0146 0240 010



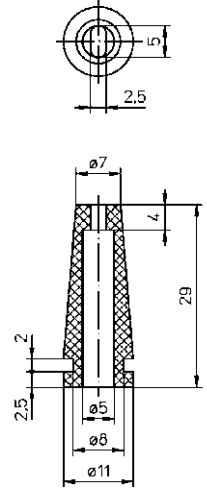
**12-1462**

0146 0250 010



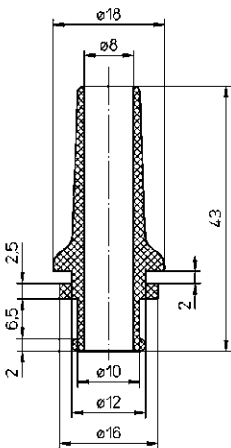
**12-600**

0146 0210 010



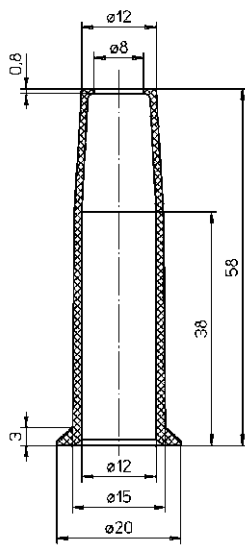
**12-1374**

0146 0230 010



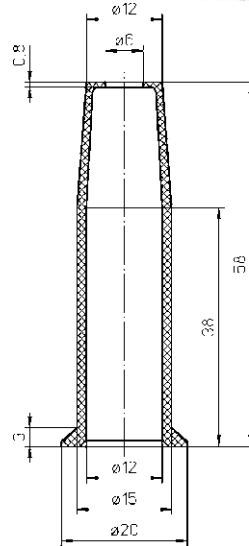
**12-908**

0146 0220 010



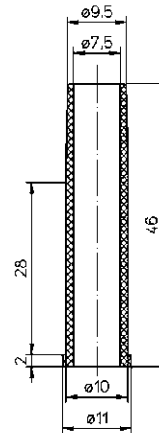
**12-552**

0146 0140 010



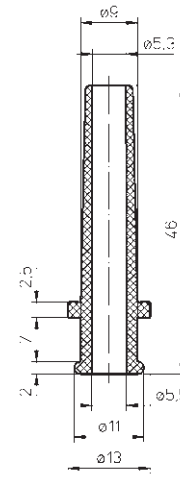
**12-1584**

0146 0261 010



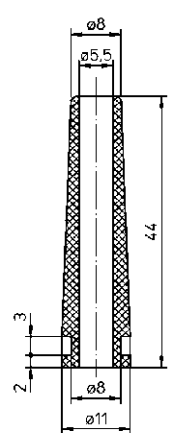
**12-553**

0146 0150 010



**12-583**

0146 0180 010



**12-599**

0146 0200 010

*Nouveau*