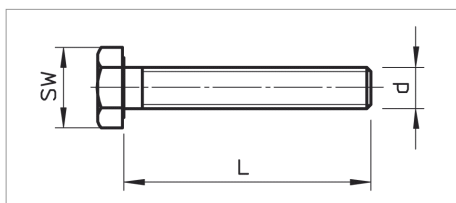
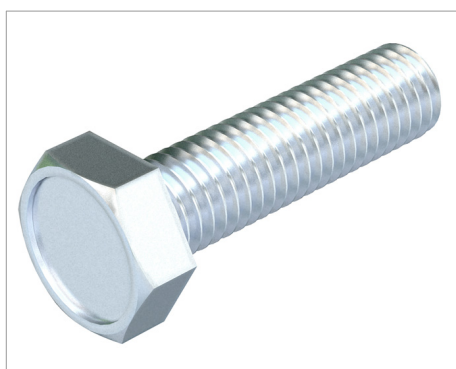


List technických údajů

Šroub se šestihrannou hlavou, ISO 4017



CE

Šroub se šestihrannou hlavou podle ISO 4017 s metrickým závitem

Typ	Rozměr mm	Rozměr L mm	Rozměr d mm	SW mm	Bal. kus	Hmotnost kg/100 ks	Obj. č.
342 M6X16 G	M6 x 16	16	6	10	100	0.494	3156141
342 M6X20 G	M6 x 20	20	6	10	100	0.580	3156206
342 M6X25 G	M6 x 25	25	6	10	100	0.665	3156257
342 M6X30 G	M6 x 30	30	6	10	100	0.751	3156303
342 M6X35 G	M6 x 35	35	6	10	100	0.837	3156354
342 M6X40 G	M6 x 40	40	6	10	100	0.923	3156400
342 M8X20 G	M8 x 20	20	8	13	100	1.230	3158209
342 M8X25 G	M8 x 25	25	8	13	100	1.390	3158241
342 M8X30 G	M8 x 30	30	8	13	100	1.550	3158306
342 M8X40 G	M8 x 40	40	8	13	100	1.870	3158403
342 M8X50 G	M8 x 50	50	8	13	100	2.180	3158500
342 M10X20 G	M10 x 20	20	10	17	100	2.320	3160203
342 M10X30 G	M10 x 30	30	10	17	100	2.820	3160300
342 M10X40 G	M10 x 40	40	10	17	50	3.240	3160408
342 M10X50 G	M10 x 50	50	10	17	50	3.820	3160505
342 M10X60 G	M10 x 60	60	10	17	50	4.330	3160602
342 M12X30 G	M12 x 30	30	12	19	50	4.020	3162303
342 M12X40 G	M12 x 40	40	12	19	50	4.740	3162400
342 M12X50 G	M12 x 50	50	12	19	50	5.450	3162508

St Ocel

G galvanicky zinkováno

H €/100 ks