

TCS097 2x TL-D P

TCS097

Low-cost luminaire for TL-D fluorescent lamp(s) with choice of 2 covers (O = opal and P = prismatic). Covers are supplied with the luminaire.

Applications

- Recreational areas
- Public buildings, hospitals and schools
- Dust protected

Technical description

- Gear/power supply:
HF(optional): 220 V - 240 V (HFB, HFP, EI*)
conventional: 230 V
 - Lamps: 1 and 2 TL-D fluorescent
 - Housing: base plate in white sheet steel with plastic end-caps for perfect finishing
 - Covers: in PMMA, modern design
- *Electronic Included

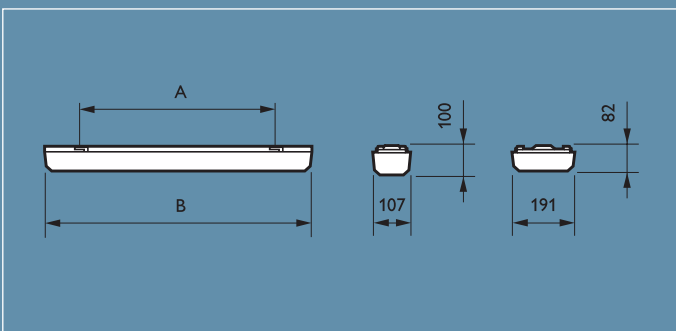
Installation

Mounting: individual.

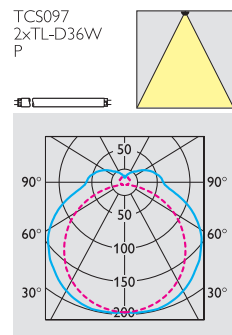
Method: traditional key holes for (wood) screw fixing.



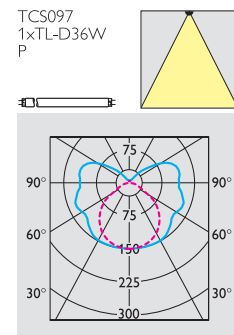
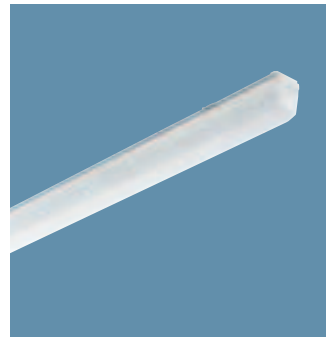
Dimensions in mm



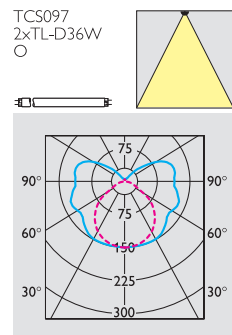
Product ID	A	B
TCS097 1x18W/2x18W	450	650
TCS097 1x36W/2x36W	900	1256
TCS097 1x58W/2x58W	1200	1556



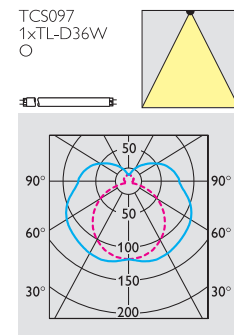
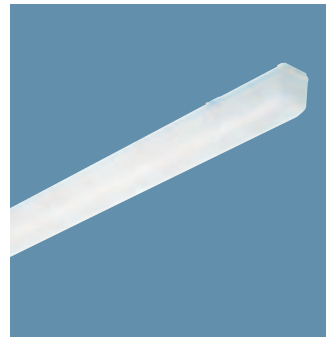
TCS097 2x TL-D36W P



TCS097 1x TL-D36W P



TCS097 2x TL-D36W O



TCS097 1x TL-D36W O

Preferred selection

Product ID	Optics	Weight (kg)	Light Output Ratio (LOR)	European Order Code (EOC)
TCS097 1xTL-D36W HFP P PI	P	1.68	0.84	28448400
TCS097 1xTL-D36W IC P	P	2.13	0.84	10632800
TCS097 1xTL-D58W HFP P PI	P	1.98	0.82	28452100
TCS097 1xTL-D58W IC P	P	2.89	0.82	10636600
TCS097 2xTL-D18W I P	P	1.95	0.72	10647200
TCS097 2xTL-D36W HFP P PI	P	2.70	0.74	28449100
TCS097 2xTL-D36W IC P	P	3.33	0.74	10634200
TCS097 2xTL-D58W IC P	P	5.26	0.71	10638000
TCS097 2xTL-D58W HFP P PI	P	3.16	0.71	28453800
TCS097 1xTL-D36W IC O	O	2.13	0.76	10631100
TCS097 1xTL-D36W EI O	O	1.70	0.76	12125300
TCS097 1xTL-D36W HFP O PI	O	1.68	0.76	28446000
TCS097 1xTL-D58W IC O	O	2.89	0.74	10635900
TCS097 1xTL-D58W HFP O PI	O	1.98	0.74	28450700
TCS097 2xTL-D18W I O	O	1.95	0.64	10646500
TCS097 2xTL-D36W IC O	O	3.33	0.76	10633500
TCS097 2xTL-D36W EI O	O	3.00	0.65	12127700
TCS097 2xTL-D36W HFP O PI	O	2.70	0.65	28447700
TCS097 2xTL-D58W IC O	O	5.26	0.63	10637300
TCS097 2xTL-D58W EI O	O	3.00	0.63	12131400
TCS097 2xTL-D58W HFP O PI	O	3.16	0.63	28451400