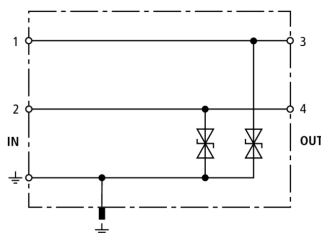


DCO RK E 24 (919 988)

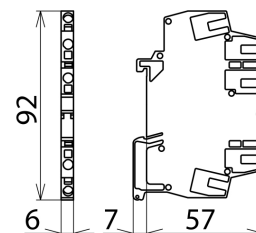
- Surge protection with terminal blocks
- Can be subjected to high nominal currents
- For installation in conformity with the lightning protection zones concept at the boundaries from 1 – 2 and higher



Figure without obligation



Basic circuit diagram DCO RK E 24



Dimension drawing DCO RK E 24

Finely limiting surge protective device with efficient diodes to earth for two single lines with common reference potential as well as unbalanced interfaces.

Type	DCO RK E 24
Part No.	919 988
SPD class	TYPE 2 P1
Nominal voltage (U_N)	24 V
Max. continuous operating d.c. voltage (U_c)	28 V
Max. continuous operating a.c. voltage (U_c)	19.5 V
Nominal current (I_L)	10 A
C1 Total nominal discharge current (8/20 μ s) (I_n)	0.6 kA
C1 Nominal discharge current (8/20 μ s) per line (I_n)	0.3 kA
Voltage protection level line-line for I_n C1 (U_p)	≤ 96 V
Voltage protection level line-PG for I_n C1 (U_p)	≤ 48 V
Voltage protection level line-line at 1 kV/ μ s C3 (U_p)	≤ 76 V
Voltage protection level line-PG at 1 kV/ μ s C3 (U_p)	≤ 38 V
Cut-off frequency line-PG (f_c)	5.5 MHz
Capacitance line-line (C)	≤ 0.6 nF
Capacitance line-PG (C)	≤ 1.2 nF
Operating temperature range	-40°C...+80°C
Degree of protection	IP 00, with cover IP 20
For mounting on	35 mm DIN rails acc. to EN 60715
Connection (input/output)	spring / spring
Cross-sectional area, solid	0.08 - 2.5 mm ²
Cross-sectional area, flexible	0.08 - 2.5 mm ²
Earthing via	DIN rail / terminal
Enclosure material	polyamide PA 6.6
Colour	yellow
Test standards	IEC 61643-21 / EN 61643-21
SIL classification	SIL1 / SIL3 ^{*)}
Approvals	GOST
Weight	33 g
Customs tariff number	85363010
GTIN	4013364092969
PU	1 pc(s)

^{*)} For more detailed information, please visit www.dehn.de/en/sil/

We reserve the right to introduce changes in performance, configuration and technology, dimensions, weights and materials in the course of technical progress. The figures are shown without obligation.